

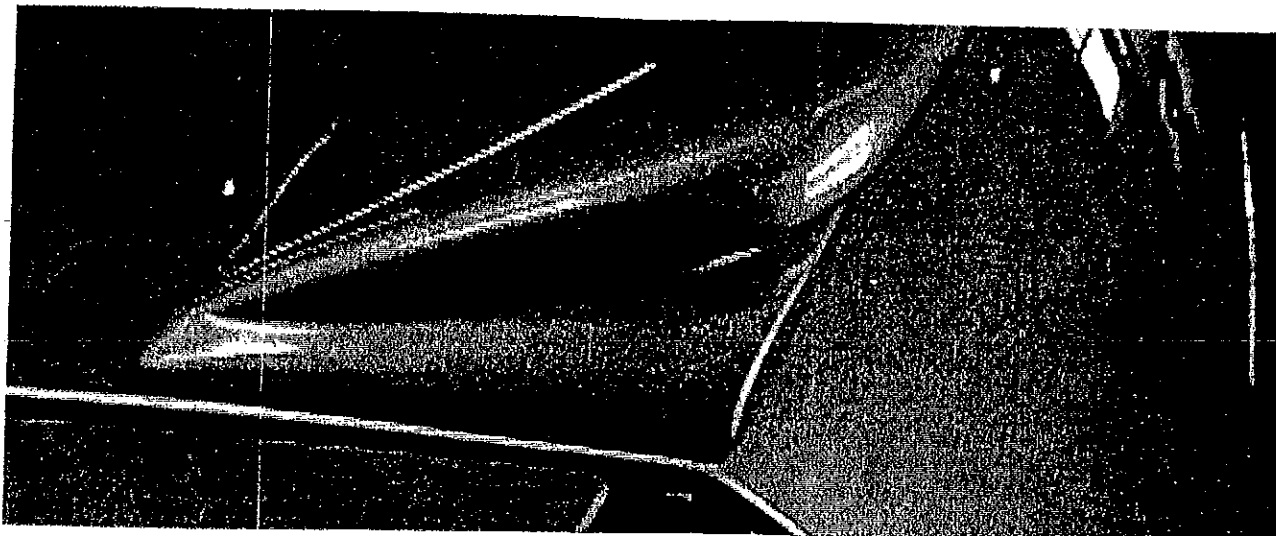


American Best Car Parts Inc.
2891 E. Via Martens • Anaheim, CA 92806-1751
714.632.1709 • 1.800.999.8753
Fax 714.632.2738
www.teamxenon.com

Part No. 12505

Rear Deck Spoiler

2005-2007 Chrysler 300



PLEASE READ INSTRUCTIONS THOROUGHLY BEFORE PRECEDING

We have provided complete instructions and in most applications specific hardware, 3M tape, and specialized brackets or braces. The list of these items is listed on page two of the instructions --Before starting please verify that they are included with the shipment.

Also, verify that you received the correct part. All part numbers are embossed on the inside of the urethane component(s). The list of part(s) and hardware provided is noted at the bottom of page 2.

Tools & general materials required: #7447 Scotchbrite pads, cleaners, sandpaper, various hand tools as required, drill, 3/32" drill bit.

THERE ARE FOUR PHASES TO MOST INSTALLATIONS:

- 1) Removal of factory parts that might interfere with the installation and then TEST FIT the parts
- 2) Preparation of the parts for paint--and painting
- 3) Installation of the 3M tape (If Applicable)
- 4) Installation of the parts

PHASE 1) REMOVAL & TEST FIT

-REMOVAL: Nothing needs to be removed from the truck lid.

TEST FIT the parts to verify excellent fit

DO NOT PREP, DRILL OR PAINT THE PARTS UNTIL THIS IS DONE.

NOTE: Occasionally, our urethane parts might seem to be slightly distorted upon test fit. If so, place them in the sun bottom edge down (if a warm day) or in a warm area for an hour or more and they should return to their original shape.

PHASE 2) PREPARATION OF URETHANE PART(S) FOR PAINTING (July, 05): This process is following an approved Sherwin Williams process and materials. Consult your paint supplier for equivalent materials and / or processes.

- WASH the paintable surfaces and the tape ledge w/ heavy duty detergent degreaser i.e...purple stuff, red hot and USP90 scuff gel, use a gray scuff pad until dull and rinse thoroughly.
- SAND across item with 400 grit or finer to check for imperfections and repair as needed.
- RE-WASH with heavy detergent degreaser and USP90 scuff gel using gray scuff pad to remove residue. Rinse thoroughly and wipe dry with a lint free towel.
- WIPE item down using SC159 plastic and anti-static cleaner with lint free towel.
- SPRAY item with UPO7227 plastic adhesion promoter.
- SPRAY item with P30 sealer base coat then clear coat.
- DO NOT oven bake dry our parts above 100 degrees F. They should be well supported during any heat cycle to avoid the flexible part from warping.

PHASE 3) INSTALLATION OF THE 3M TAPE

- REMOVE any paint overspray on the tape area of the part
- CLEAN the tape ledge on the inside of the part with MEK or Acetone.

- ROUGH up the tape ledge using a 3M burgandy scotchbrite pad that has been dipped in MEK or Acetone and then wipe clean with the same cleaner
- APPLY the provided 3M adhesion promoter onto the part and PRESS the tape on with the handle part of scissors. There should be tape installed on all 4 sides of the part.
- ALLOW the part to set with the tape applied for about 30 minutes - this will help the curing process.

PHASE 4) INSTALLATION OF THE PART(S) (perform in a warm area above 70 degrees)

- CLEAN the vehicle where the tape will stick with a good wax & grease remover

NOTE: The location of our spoiler at the ends is 11/16" rearward (the back edge of our part) from where the top of the rear taillight lens attaches to the steel fender.

- PULL a corner of the tape red backing up above the edge of the part and set the part in place, pull the red backing from the tape as you go and press the part into place. Set one end of the spoiler first and then work around to the other end of the part applying forward and downward pressure.
- Some people drill (1/8") the edge of the truck lid where the thick part of the ends of the spoiler are located and install 1- #8 x 3/4 non self-tapping screw at each end.

Drill the deck lid (only- do not drill into the spoiler) from below. The location of the screw on each side is: 3/4" from the outside edge of the spoiler inward and 1 3/8" rearward from the front leading edge of the spoiler.

Sources for some of the referenced materials: MEK (Methel Ethyl Ketone) can usually be purchased at a hardware store. Scotchbrite, glazing putty and TING can be purchased from automotive paint supply stores. TSP is usually available at your local grocery store-- located in the cleaners section.

HARDWARE PROVIDED: (16)- Feet, .060 x 1/2" tape, (2)- 3M 4298 adhesion promoter
(2)- #8 x 3/4" non self-tapping screws

FOR PART NUMBER(S): #12505 Rear Deck Spoiler

DATE:

Revised: February 20, 2006